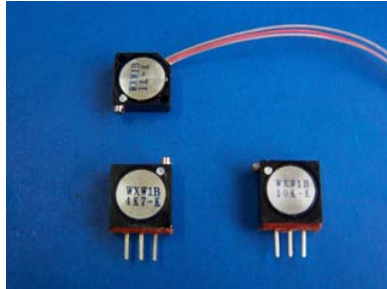


# WXW1B Square Trimmer Potentiometer



## Features

- Multiturn / Wirewound
- Industrial / Sealed
- Top and side adjust types  
(1,2,3 most popular)

### Electrical Characteristics

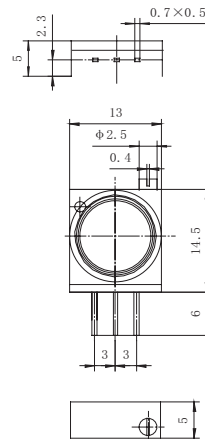
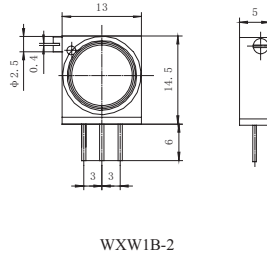
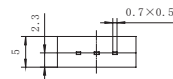
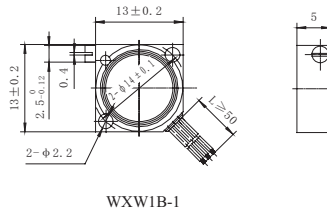
Standard Resistance Range  
100 to 15K ohms  
(see standard resistance table)  
Resistance Tolerance  
±10% or ±5% std.  
(tighter tolerance available)  
Absolute Minimum Resistance  
5%R max.  
Insulation Resistance  
500 vdc  
1,000 Megohms min.  
Dielectric Strength  
101.3 kPa 500 vac  
11.59 kPa 200 vac  
Adjustment Angle  
32 turns min

### Environmental Characteristics

Power Rating (100 volts max.)  
0.5 watt (70°C), 0 watt (125°C)  
Temperature Range  
-55°C to +125°C  
Temperature Coefficient  
±100ppm/°C  
Vibration  
98 m/s<sup>2</sup>  
(2% Δ TR; 3% Δ VR)  
Shock  
390 m/s<sup>2</sup>  
(2% Δ TR; 2% Δ VR)  
Load Life  
1,000 hours 0.5 watt @ 70°C  
(5% Δ TR; 8% or 8 ohm, Whichever is greater, CRV)  
Rotational Life  
200 cycles  
(5% Δ TR; 8% or 8 ohm, Whichever is greater, CRV)

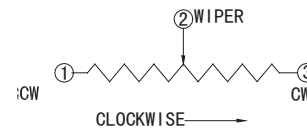
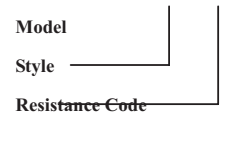
### Physical Characteristics

Mechanical Angle  
360°  
Torque  
20 mN • m max.



### How to order

WXW1B-1-102



### Standard Resistance Table

Resistance (Ohms)	Resistance Code
100	101
200	201
500	501
1,000	102
2,000	202
5,000	502
10,000	103
20,000	203
25,000	253
50,000	503
100,000	104
200,000	204
250,000	254
500,000	504
1,000,000	105
2,000,000	205

Special resistance available  
Detail Specification: Q/RYS07-2002